

Discover EM12c Repository Database after Installation

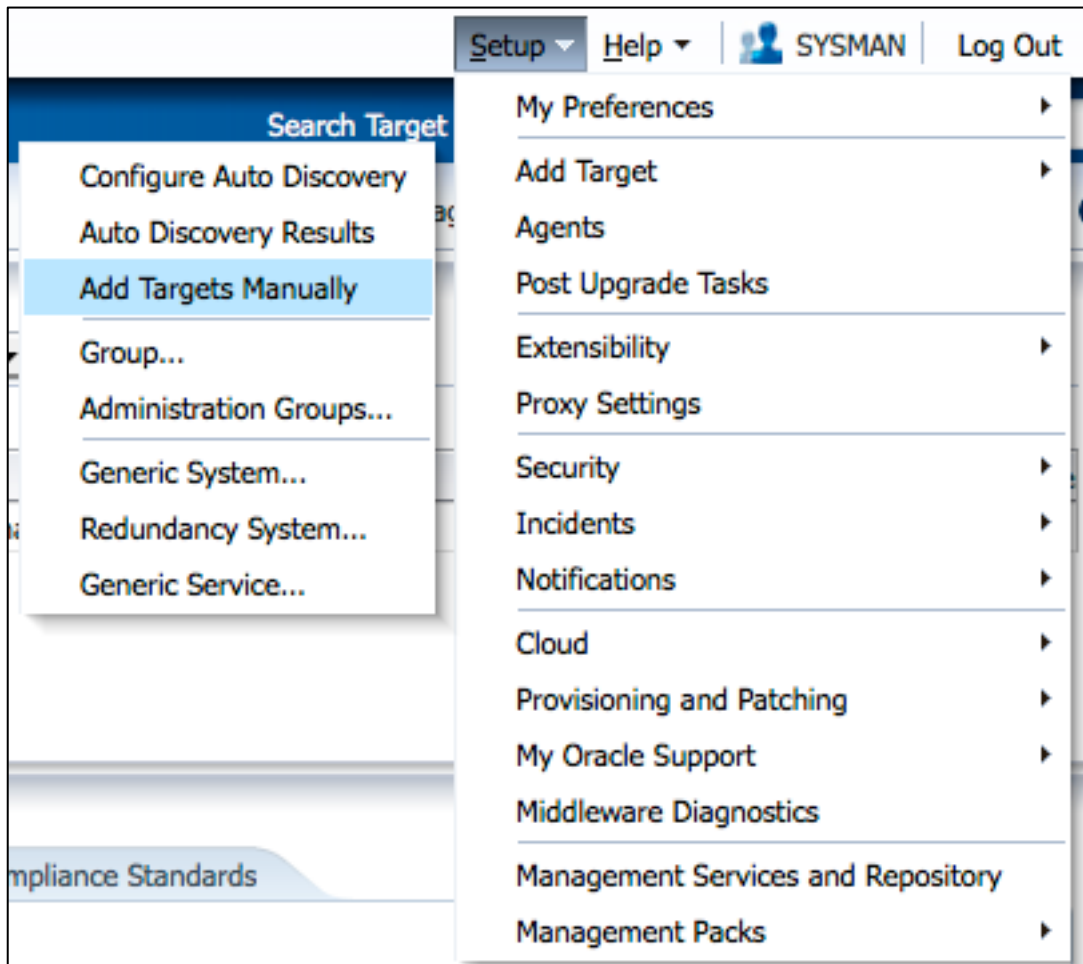
Date: 5 January 2012

Author: Rob Zoetewij

<http://oemgc.wordpress.com>

After initial installation of Enterprise Manager 12c, you will notice that all EM 12c related targets (Host, Middleware Targets, Agent) have been discovered except for the Repository Database and Listener.

Here is how to discover the EM 12c Repository Database, in this example named emrep.



From the **Setup** menu, navigate **Add Target** → **Add Targets Manually**

ORACLE Enterprise Manager Cloud Control 12c Setup Help SYSMAN Log Out

Enterprise Targets Favorites History Search Target Name

Add Targets Manually

Page Refreshed Jan 4, 2012 10:44:43 AM CET

Instruction
Add targets is a process that allows you to choose targets to be monitored and managed by Enterprise Manager. Use the following to configure the targets to be monitored.

Configure Auto Discovery

- Setup discovery using IP Scan
- Setup discovery on Single Host
- Setup discovery on Multiple Hosts

→

Add Targets from Auto Discovery Results

- Add Non-Host Targets
- Add Discovered Hosts
- Ignore Discovered Targets

→

Add Targets Manually or Using Guided Process

- Add Targets Manually
- Add Related Targets
- Use Discovery Modules

Add Targets Manually

Add Host Targets
 Add Non-Host Targets Using Guided Process (Also Adds Related Targets)
 Add Non-Host Targets by Specifying Target Monitoring Properties

Target Types: Oracle Database, Listener and Automatic Storage Management

Select option “Add Non-Host Targets Using Guided Process” and select “Oracle Database, Listener and Automatic Storage Management” from the Target Types pull-down and press [Add Using Guided Discovery].

ORACLE Enterprise Manager Cloud Control 12c Setup Help SYSMAN Log Out

Enterprise Targets Favorites History Search Target Name

Add Database Instance Target: Specify Host

In order to add targets to be monitored by Enterprise Manager, you must first specify the host on which those targets reside.
Type the host name or click the icon to select the host.

* Host:

TIP If the host you specify is a member of a cluster target, the process will allow you to add cluster database targets on the cluster.

Overview

This process allows you to add databases, listeners, and Automated Storage Managers (ASM) as monitored targets. A monitored target is an entity that you want to monitor and administer using Enterprise Manager. Enterprise Manager will search for targets of these types on the host that you specify.

Enter the name of the OMS Host by using the Magnifier icon and press [Continue]


ORACLE Enterprise Manager Cloud Control 12c Help

Targets Discovered on Host: em12c.mycorpdomain.com

Target discovery is in progress.

This operation may take several minutes. This page will automatically forward to the next page when done.

Processing targets on Host :: em12c.mycorpdomain.com



Target discovery is in progress. This may take several minutes.

ORACLE Enterprise Manager Cloud Control 12c Help ▾



Targets Discovered on Host: em12c.mycorpdomain.com


Databases

The following databases have been discovered on this host. Administrator can configure the database system name for each of the discovered databases. If user specifies group, Enterprise Manager will add the discovered target(s) to the specified group. Global target properties can be specified on following page for selected targets

Additional properties such as password can be provided for discovered databases by clicking "Configure" button.

Select All | Select None

Select	Name	Database System	Group	Configure	Metrics
<input checked="" type="checkbox"/>	emrep.mycorpdomain.com	emrep.mycorpdomain.com_sys	<input type="text"/>		


 **TIP** Configuration changes will only take effect for those databases that are added as targets.

Listeners

The following listeners have been discovered on this host.

Select All | Select None

Select	Name	Listener Name	Oracle Home	Group	Port	Listener Directory
<input checked="" type="checkbox"/>	LISTENER_em12c.mycorpdomain.com	LISTENER	/u01/app/oracle /product/11.2.0/db1	<input type="text"/>	1521	/u01/app/oracle/product/11.2.0 /db1/network/admin

 Targets that have this configuration icon are only partially configured. In order to add one of these targets, click on this icon in the configuration column and complete the configuration.

After some time the "Targets Discovered..." page shows up

The page shows both the EM Repository Database emrep.mycorpdomain.com and Listener LISTENER_em12c.mycorpdomain.com

At the right side of the emrep database a red color icon is shown. This icon is red colored because it's configuration is not finished yet. To do so, we press the icon.

ORACLE Enterprise Manager Cloud Control 12c Help ▾

Cancel Back Step 5 of 5 OK

Properties Install Packages Credentials Parameters **Review**

Configure Database Instance: Review

Review the changes made below for this database. Select "OK" when you are done, or select "Back" to edit the changes.

Name emrep.mycorpdomain.com
 Database System emrep.mycorpdomain.com_sys

Properties

Name	Value
Oracle Home Path	/u01/app/oracle/product/11.2.0/db1
Monitor Username	dbstmp
Monitor Password	*****
Role	*****
Listener Machine Name	em12c.mycorpdomain.com
Port	1521
Database SID	emrep
Preferred Connect String	

TIP Configuration changes will only take effect for those databases that are added as targets.

Install Monitor Objects

Skip these steps. These metrics will remain disabled.

Cancel Back Step 5 of 5 OK

Next press [OK] to finish the configuration

ORACLE Enterprise Manager Cloud Control 12c Help ▾

Targets Discovered on Host: em12c.mycorpdomain.com

Cancel Next Finish

Databases

The following databases have been discovered on this host. Administrator can configure the database system name for each of the discovered databases. If user specifies group, Enterprise Manager will add the discovered target(s) to the specified group. Global target properties can be specified on following page for selected targets

Additional properties such as password can be provided for discovered databases by clicking "Configure" button.

Select All | Select None

Select	Name	Database System	Group	Configure	Metrics
<input checked="" type="checkbox"/>	emrep.mycorpdomain.com	emrep.mycorpdomain.com_sys	<input type="text"/>		

TIP Configuration changes will only take effect for those databases that are added as targets.

Listeners

The following listeners have been discovered on this host.

Select All | Select None

Select	Name	Listener Name	Oracle Home	Group	Port	Listener Directory
<input checked="" type="checkbox"/>	LISTENER_em12c.mycorpdomain.com	LISTENER	/u01/app/oracle/product/11.2.0/db1	<input type="text"/>	1521	/u01/app/oracle/product/11.2.0/db1/network/admin

Cancel Next Finish

We have now returned in the “Targets Discovered on Host...” page and you will see that the red colored icon now is colored blue indicating configuration is ok.

Next we press [Finish] to finalize the discovery phase.

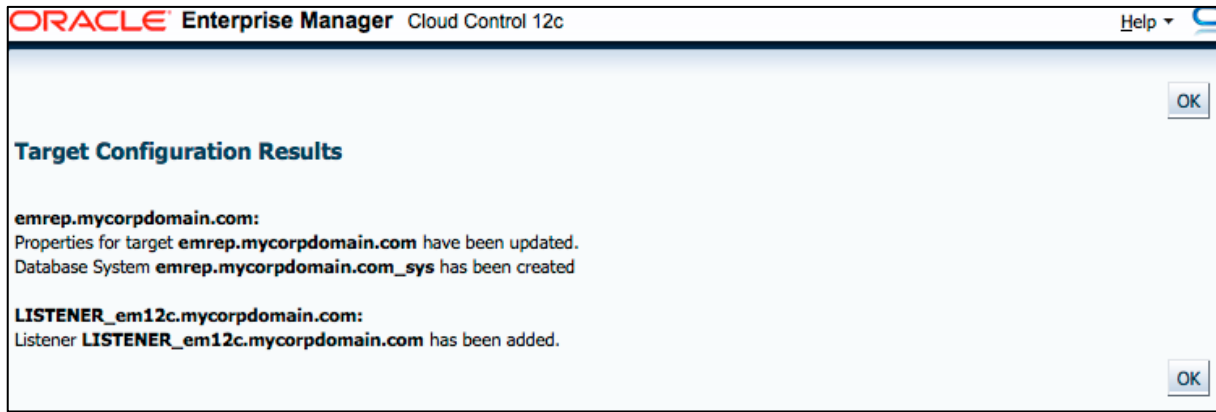
The screenshot shows the Oracle Enterprise Manager Cloud Control 12c interface. The page title is "Targets Discovered on Host: em12c.mycorpdomain.com". There are "Cancel", "Back", and "Save" buttons in the top right. A "Summary" section states: "Following Database systems will be created for the discovered databases and related targets. Rest of the targets in the second table will be saved but will not be part of any database system." Below this is a "Database Systems" section with "Expand All" and "Collapse All" links. A table lists the discovered systems:

Name	Type	Host
Database Systems		
emrep.mycorpdomain.com_sys	Database System	
emrep.mycorpdomain.com	Database Instance	em12c.mycorpdomain.com
LISTENER_em12c.mycorpdomain.com	Listener	em12c.mycorpdomain.com

Below the table is a "Targets" section with a table that shows "No items found". "Cancel", "Back", and "Save" buttons are also present at the bottom right.

Press [Save] to make sure the newly discovered Targets will be save to the OMS.

The screenshot shows the Oracle Enterprise Manager Cloud Control 12c interface. The page title is "Target Configuration Results". A blue icon with a checkmark and a clock indicates that "Target saving is in progress." The text says: "This operation may take several minutes. This page will automatically forward to the next page when done." A large blue clock icon is centered on the page. Below it, the text reads: "Target saving is in progress. This may take several minutes." A "TIP" icon (a green checkmark) is followed by the text: "This operation cannot be cancelled. It will continue even if the browser window is closed."



After some time a page shows up indicating the new Targets have been successfully saved.

Press [OK]

You will now be able to find the newly discovered Targets.

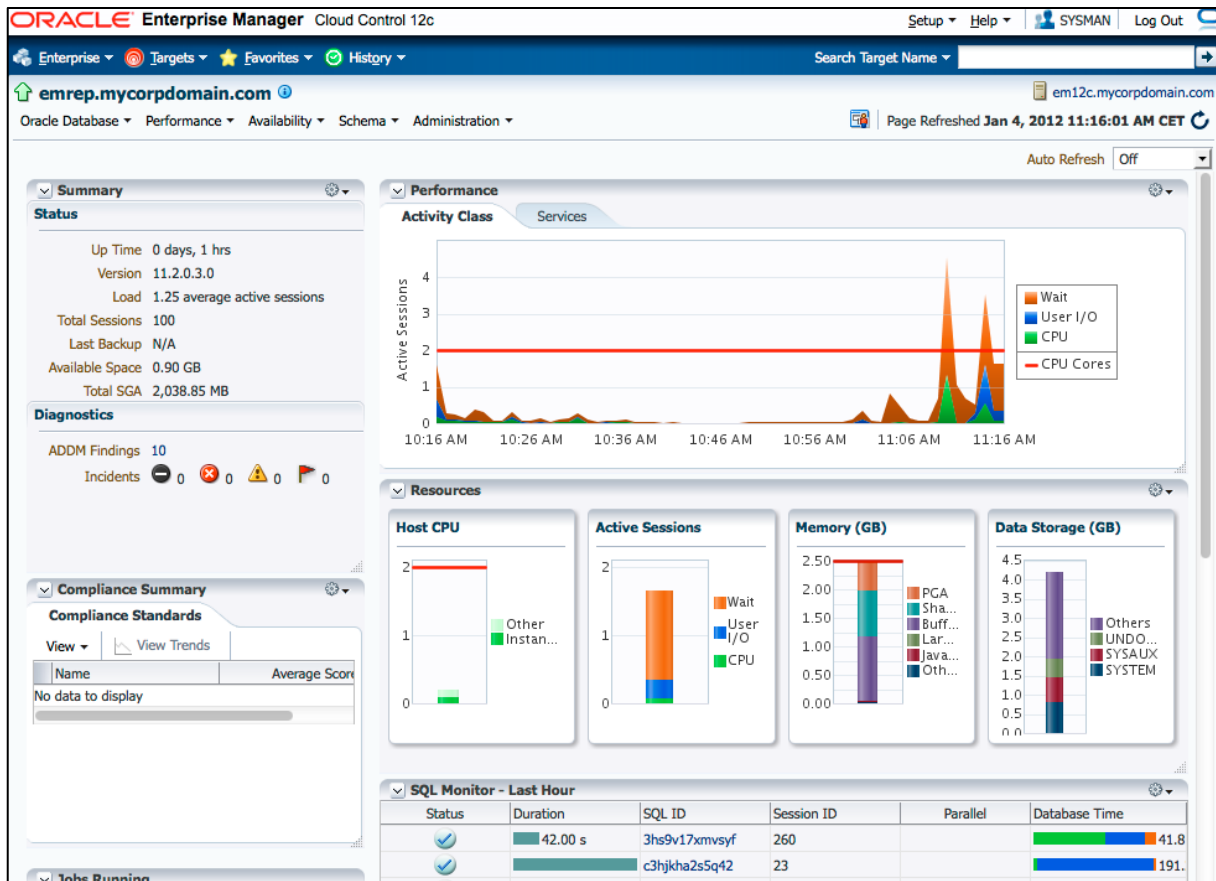


Figure 1 - Repository Database emrep

Oracle Enterprise Manager Cloud Control 12c

Enterprise ▾ Targets ▾ Favorites ▾ History ▾ Search

↑ LISTENER_em12c.mycorpdomain.com ⓘ

Oracle Listener ▾

Listener: LISTENER_em12c.mycorpdomain.com

General		State	
	Status	Up	TNS Ping (ms)
	Availability (%)	100 (Last 24 Hours)	Established Connections per minute
	Alias	LISTENER	Refused Connections per minute
	Version	11.2.0.3.0	
	Oracle Home	/u01/app/oracle/product/11.2.0/db1	
	Net Address	(ADDRESS=(PROTOCOL=TCP) (HOST=em12c.mycorpdomain.com)(PORT=1521))	
	LISTENER.ORA Location	/u01/app/oracle/product/11.2.0/db1/network/admin	
	Start Time	Jan 4, 2012 9:53:35 AM	
	Host	em12c.mycorpdomain.com	
	Oracle Restart	n/a	

Figure 2 - Database Listener LISTENER_em12c.mycorpdomain.com

Oracle Enterprise Manager Cloud Control 12c

Setup ▾ Help ▾ SYSMAN Log Out

Enterprise ▾ Targets ▾ Favorites ▾ History ▾ Search Target Name

↑ emrep.mycorpdomain.com_sys ⓘ

Database System ▾ Page Refreshed Jan 4, 2012 11:19:45 AM GMT+01:00

General		Status	
Database	emrep.mycorpdomain.com	Availability	100%
Last Backup	N/A	3 Members	2 Up 1 n/a

Most Affected Members (Last 24 Hours)				
Name	Type	Key Member	Status	Availability (%)
emrep.mycorpdomain.com				100
LISTENER_em12c.mycorpdomain.com				100

Issue Overview			
Incidents			
Open	0		
Category			
Availability	-	-	-
Performance	-	-	-
Security	-	-	-
Others	-	-	-

Compliance Summary	
Compliance Standards	
Name	Average Score
No data to display	

Job Activity			
For jobs whose start date is within the last 7 days.			
Status	Submitted to		
	Database System	Any Mem	
Problem Executions	0		
Action Required Executions	0		
Suspended Executions	0		

Dependent Targets			
Name	Type	Status	Association
/EMGC_GCDomain/GCDomain/EMGC_OMS1/emgc	Application Deployment		Stores On Data
/EMGC_GCDomain/GCDomain/EMGC_OMS1/empbs	Application Deployment		Stores On Data

Figure 3 - Database System emrep.mycorpdomain.com_sys

Starting EM12c, a Database System containing all database related targets (in this example database emrep and it's listener) is automatically created.